



## Innovative quick closure system

- ✓ Safe and easy operation without any tool
- ✓ Opening and closing in less than 10 seconds
- ✓ Full access to the extraction vessel for an easy loading & cleaning



## High quality components

- ✓ High Pressure CO<sub>2</sub> piston pump technology – High efficiency
- ✓ High efficiency and reliability – Very low maintenance cost
- ✓ Precise flow control with Coriolis mass flow meter & frequency drive
- ✓ Robuste & precise pressure regulating valve – High performance & precision



## Continuous process

- ✓ Optimized cycle time – No time-out
- ✓ Fully automated process



## Sustainable

- ✓ Minimizes energy consumption
- ✓ Low operating costs
- ✓ CO<sub>2</sub> recycling – 95% CO<sub>2</sub> recovery



**ExtrateX**  
SUPERCRITICAL FLUID INNOVATION

## Extraction

Operating pressure	0-400 bar
Operating temperature	0-100°C
CO <sub>2</sub> flowrate	1500 kg/h
Extractor Capacity	2 x 400L

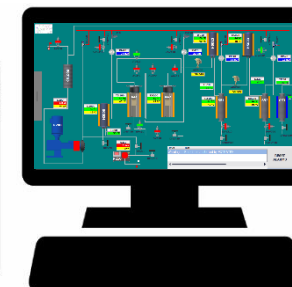
## Separation

Operating pressure	0-100 bar
Operating temperature	0-100°C
Separator capacity	1 x 100L + 1 x 50L
Cold trap capacity	1 x 50L



## PLC control

- ✓ User friendly control panel
- ✓ Recipe management & data logging
- ✓ Remote control





## Options

- ✓ 700 or 1000 bar operation
- ✓ 3rd extraction vessel to increase productivity
- ✓ Co-solvent pump to increase performance
- ✓ Cryogenic pumping system
- ✓ cGMP upgrade for clean room operation
- ✓ Software upgrade for pharmaceutical grade



Gamp<sup>®</sup> 5



## Services & Support

- ✓ Preventive & corrective maintenance all over the world
- ✓ Installation, commissioning & on-site training
- ✓ Technical support & remote assistance



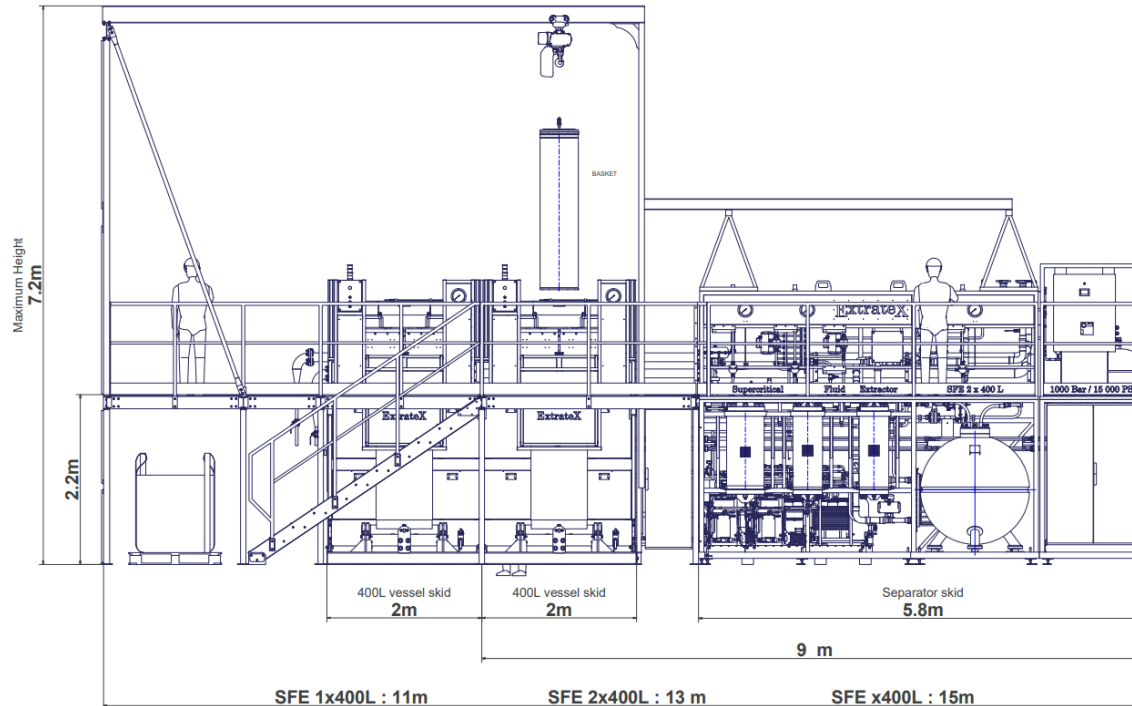
## Quality & Standards

- ✓ All our systems are CE marked according to the PED 2014/68/UE norm
- ✓ Our system can be manufactured according to other international standards : ASME / CRN
- ✓ Compliance with Machine Directive UE 2006/42/CE & Low voltage directive 2014/35/UE



**ExtrateX**  
SUPERCritical FLUID INNOVATION

257, rue Louis Lumière – 54230 Neuves-Maisons – France  
[www.extratex-sfi.com](http://www.extratex-sfi.com)



## Technical data

**Dimensions** : L 13 m x H 7 m x W 3 m

**Power supply** : 400 V – 50 Hz – 3 phases + earth



Contact us for your tailor made solution

Gonzague CHOPPE - Co-founder & CEO  
[contact@extratex-sfi.com](mailto:contact@extratex-sfi.com) – +33 (0)6 17 76 95 38

Christophe GAZIN- CEO  
[contact@extratex-sfi.com](mailto:contact@extratex-sfi.com) – +33 (0)6 20 13 35 55